



## 24M SWATH HYDROGRAPHIC VESSEL

### GENERAL SPECIFICATIONS

PROJECT	NB551
YEAR OF CONSTRUCTION	2022
CLASSIFICATION	+100A1 SSC, HSC, Workboat, SWATH, G2 "For service in Hong Kong waters"
FLAG STATE	Hong Kong
HULL FORM	SWATH, Small Waterplane Area Twin Hull
HULL MATERIAL	Aluminum Alloy

### TANK CAPACITY

FRESH WATER	1.1 m <sup>3</sup>
BALLAST	14.7 m <sup>3</sup>
SANITARY WATER	0.65 m <sup>3</sup>
BILGE	0.87 m <sup>3</sup>

### MAIN PARTICULARS

LENGTH OVERALL	24.9 m
BREADTH MLD	10.2 m
DEPTH MLD	5.19 m
DESIGN DRAFT	2.47 m
GROSS TONNAGE	193 GT
DISPLACEMENT@50% LOADING	125 tons
SEAKEEPING	Fully operational up to Sea state 5
ENDURANCE	12.5 hrs at 18 knots & 27.5 hrs at 8 knots for 5 working days

### CAPACITIES

FUEL OIL	7.2 m <sup>3</sup>
RANGE	440 nautical miles
TOP SPEED	18 knots

## PROPULSION SYSTEM

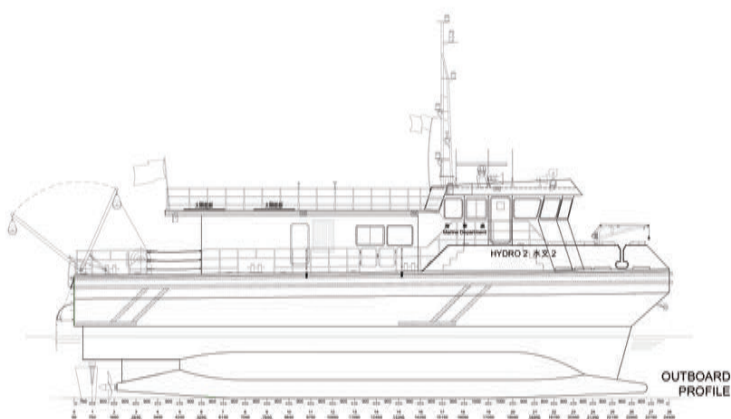
PROPULSION	2 x ABB M3LP 400 E-Motor, 750kW@1500rpm ABB ACS880 AFE
GEARBOX	2 x ZF 3000, gear ratio 1:2.5
PROPELLER	2 x NiAlBr 5-blade propeller, d=1300mm
GENERATOR	4 x Caterpillar C18, 465ekW
STABILIZER	IEI Ride Control System

## DECK MACHINERY

AFT A-FRAME	A-frame with SWL of 1 ton
SIDE DAVIT	Port side swing davit with SWL of 150 kg
ANCHOR WINDLASS	Hypac HEAW1012

## HYDROGRAPHIC EQUIPMENT

MULTIBEAM SONAR	EM 2040-07 Dual TX & RX
SINGLE BEAM ECHO SOUNDER	Simrad 200-35 & 38-9
INERTIAL NAVIGATION SYSTEM (INS)	POS MV OCEANMASTER
MINI SOUND VELOCITY SENSOR (MINI SVS)	VALEPORT MiniSVS
DGNSS RECEIVER	TRIMBLE SPS356
SOUND VELOCITY PROFILER	MIDAS SVX2 Combined
FORWARD LOOKING SONAR	FLS 3D



## NAVIGATION EQUIPMENT

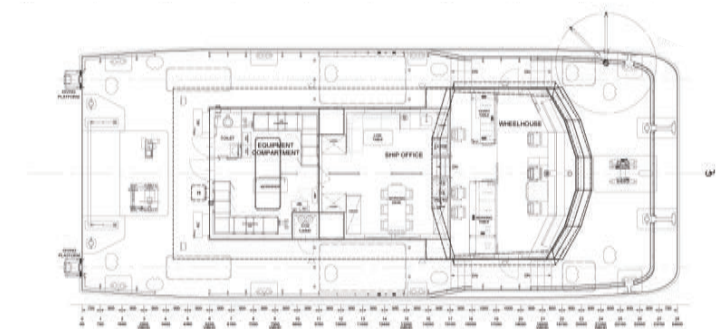
RADAR	HLD-RADAR 900
DGPS	FURUNO GP-1871F
GYRO COMPASS	SIMRAD GC-80
ECHO SOUNDER	FURUNO FCV-688
AIS	Samyung ENC SI-70A Class A AIS
ECDIS	HLD-ECDIS 600
SPEEDLOG	FURUNO DS-85
NAVIGATION LIGHT	Hella Marine NavILED PRO

## COMMUNICATION EQUIPMENT

VHF	SAILOR RT6222
LOUDHAILER/SIREN	FURUNO LH-5000
NAVTEX	FURUNO NX-700
GMDSS PORTABLE VHF	SAILOR SP3520

## ACCOMMODATION

CREW SEATING	KPM Seat
LIVING SPACE	Fully equipped pantry, Mess Area with Sofa seating
WORK SPACE	Indoor ship office area 41 m <sup>2</sup>



**Lungteh Shipbuilding Co., Ltd**  
No.15, Dexing 5th Rd., Dongshan  
Township, Yilan County, Taiwan

T +886 3 9901166  
F +886 3 9905650  
E sales@lungteh.com

