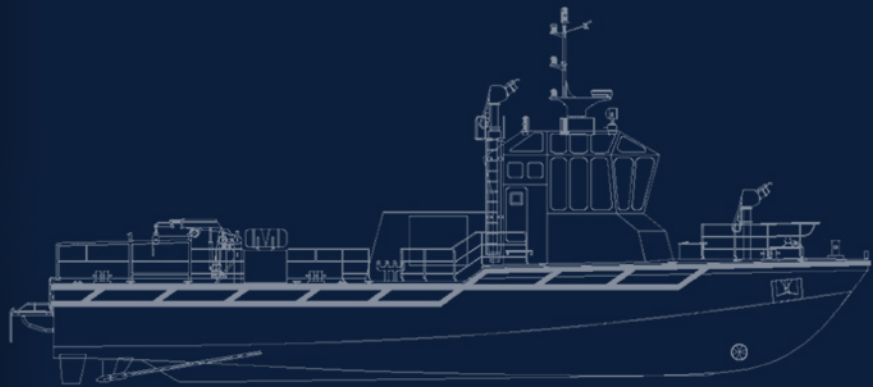
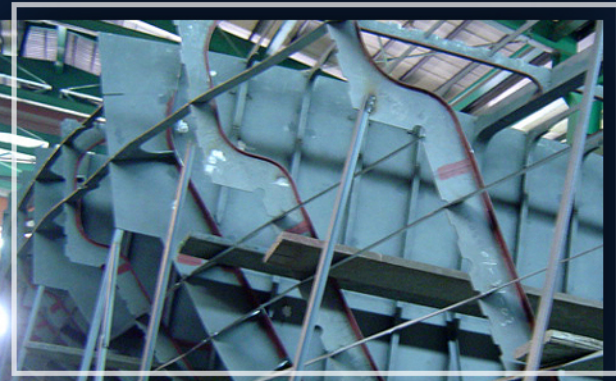


# 25M FIRE FIGHTING AND RESCUE BOAT

We insist each boat as a work of art.



**KUWAIT FIRE DEPARTMENT**



## PRINCIPAL PARTICULARS

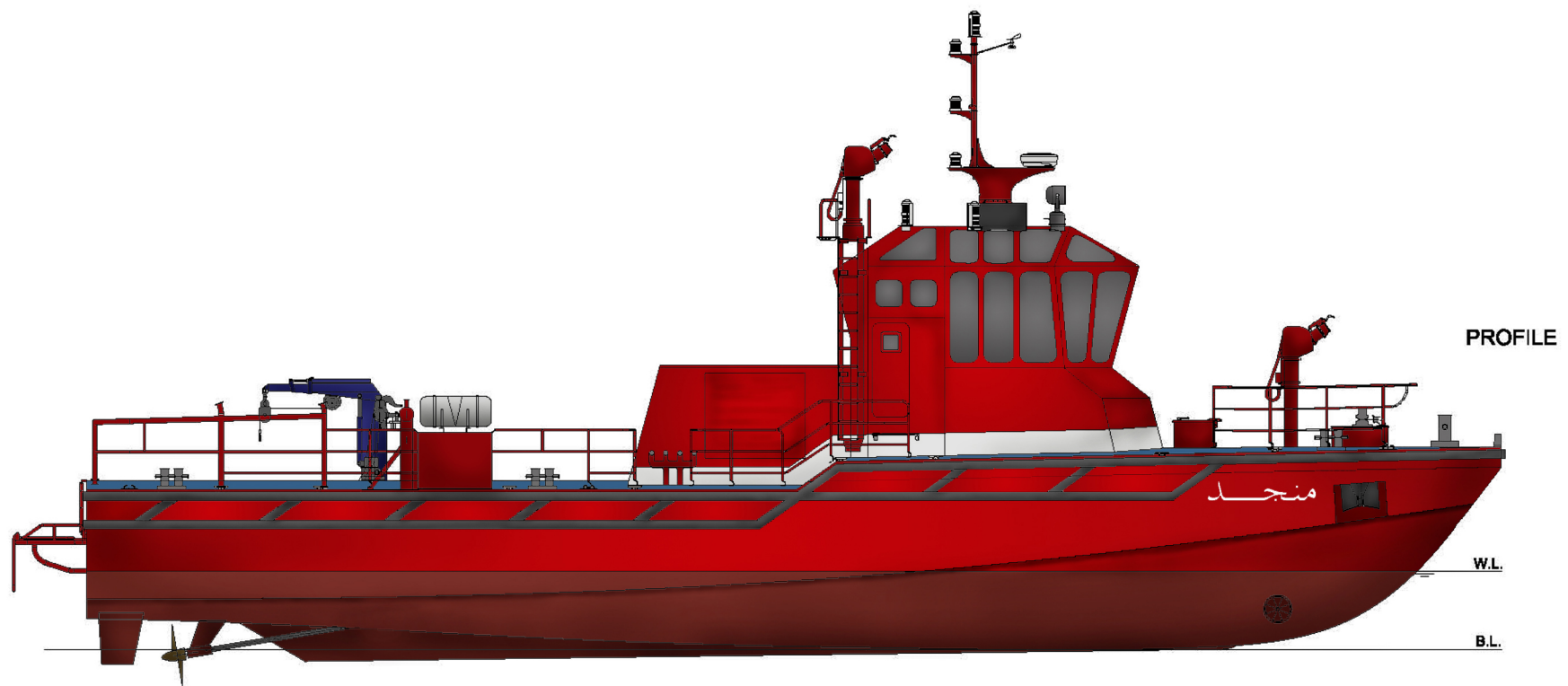
LENGTH O.A.	25.00 M
BREADTH MLD.	6.50 M
DEPTH MLD.	3.00 M
DESIGN DRAFT MLD.	1.10 M
MAXIMUM SPEED	20.00 Kts
CRUISING SPEED	20.00 Kts
CRUISING RANGE	250~300 N.M.

CLASSIFICATION

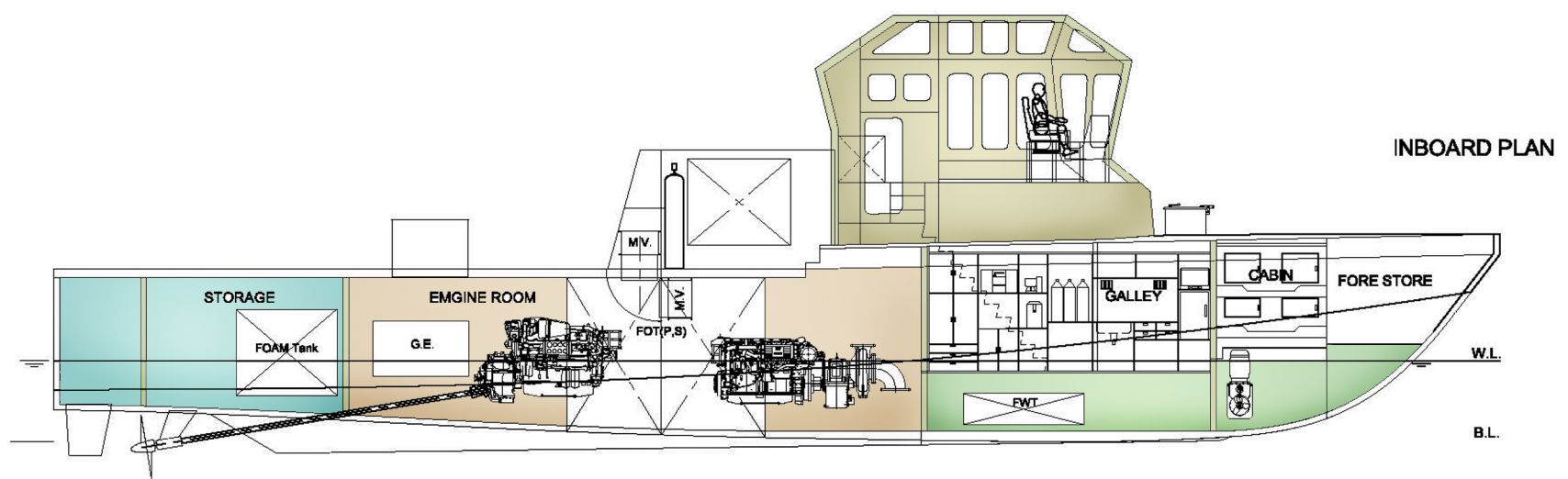
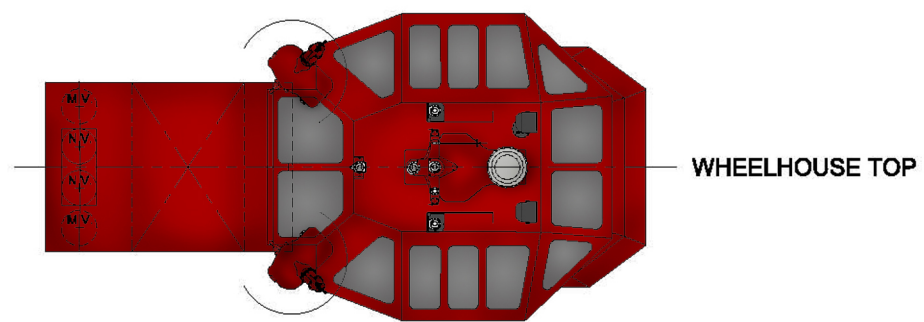
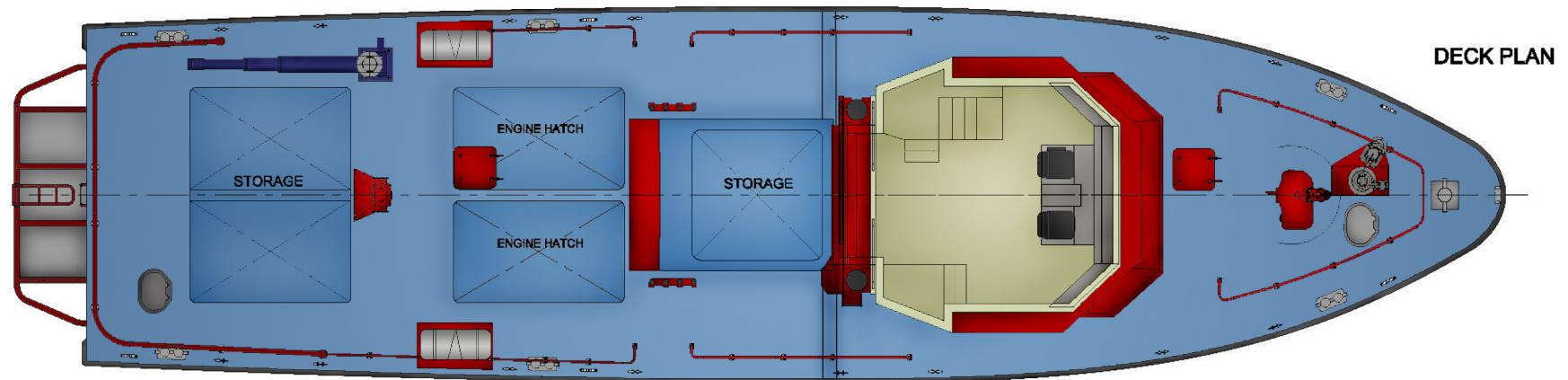
LR+100 A1,SSC  
WORKBOAT MONO,  
HSC,G3 +LMC







F0 0 F1 750 F2 1500 F3 2375 F4 3250 F5 4125 F6 5000 F7 5875 F8 6750 F9 7625 F10 8500 F11 9375 F12 10250 F13 11125 F14 12000 F15 12875 F16 13750 F17 14625 F18 15500 F19 16375 F20 17250 F21 18125 F22 19000 F23 19875 F24 20750 F25 21625 F26 22500 F27 23375 F28 24250 F29 25000



F0 0 F1 750 F2 1500 F3 2375 F4 3250 F5 4125 F6 5000 F7 5875 F8 6750 F9 7625 F10 8500 F11 9375 F12 10250 F13 11125 F14 12000 F15 12875 F16 13750 F17 14625 F18 15500 F19 16375 F20 17250 F21 18125 F22 19000 F23 19875 F24 20750 F25 21625 F26 22500 F27 23375 F28 24250 F29 25000

